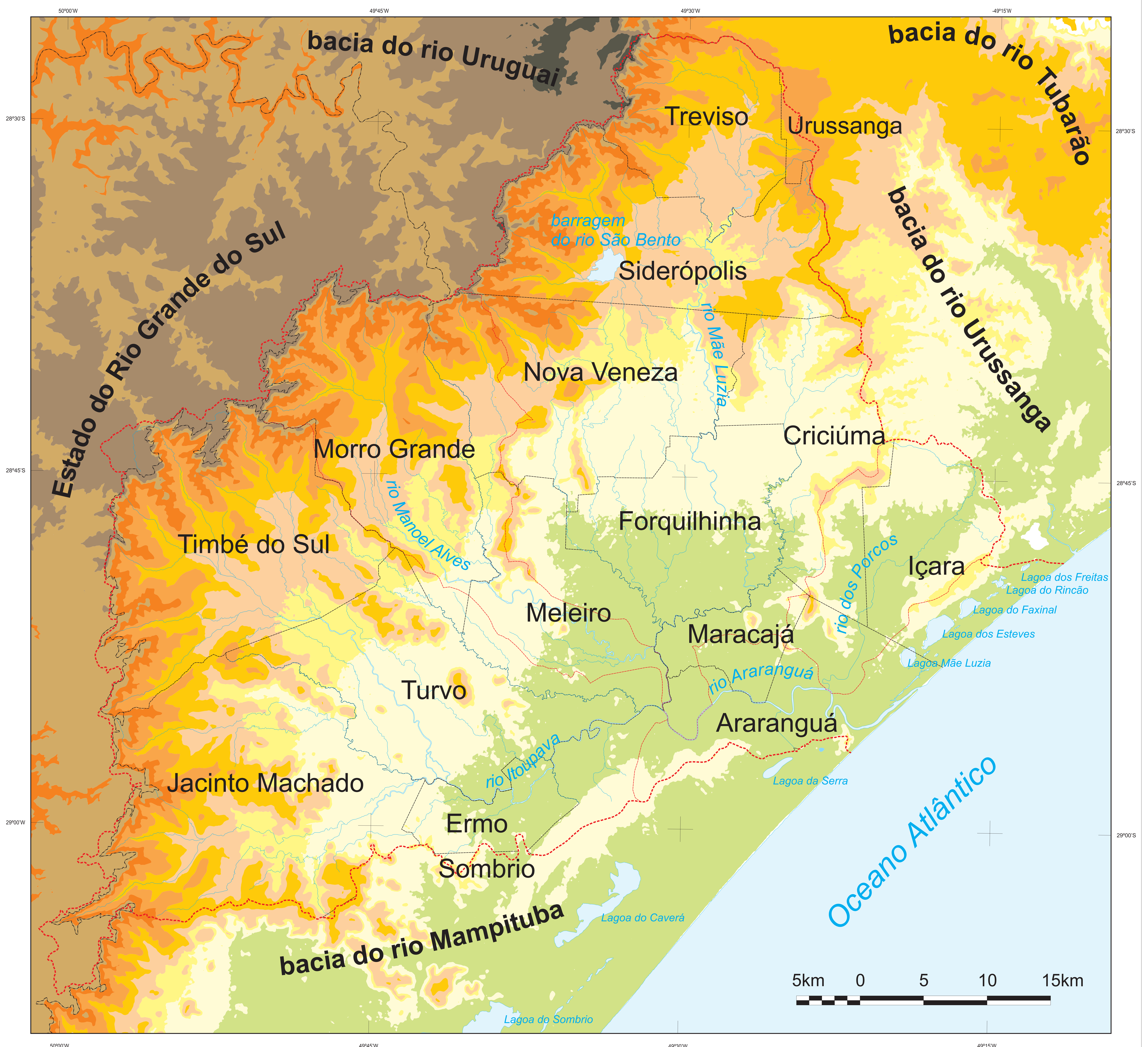

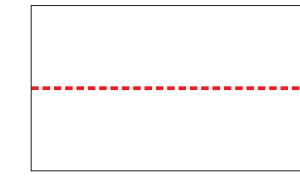
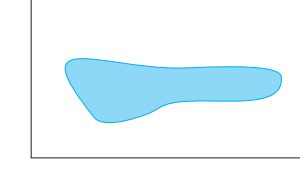
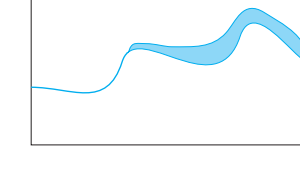
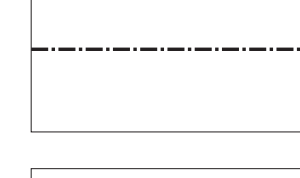



# Bacia do rio Araranguá

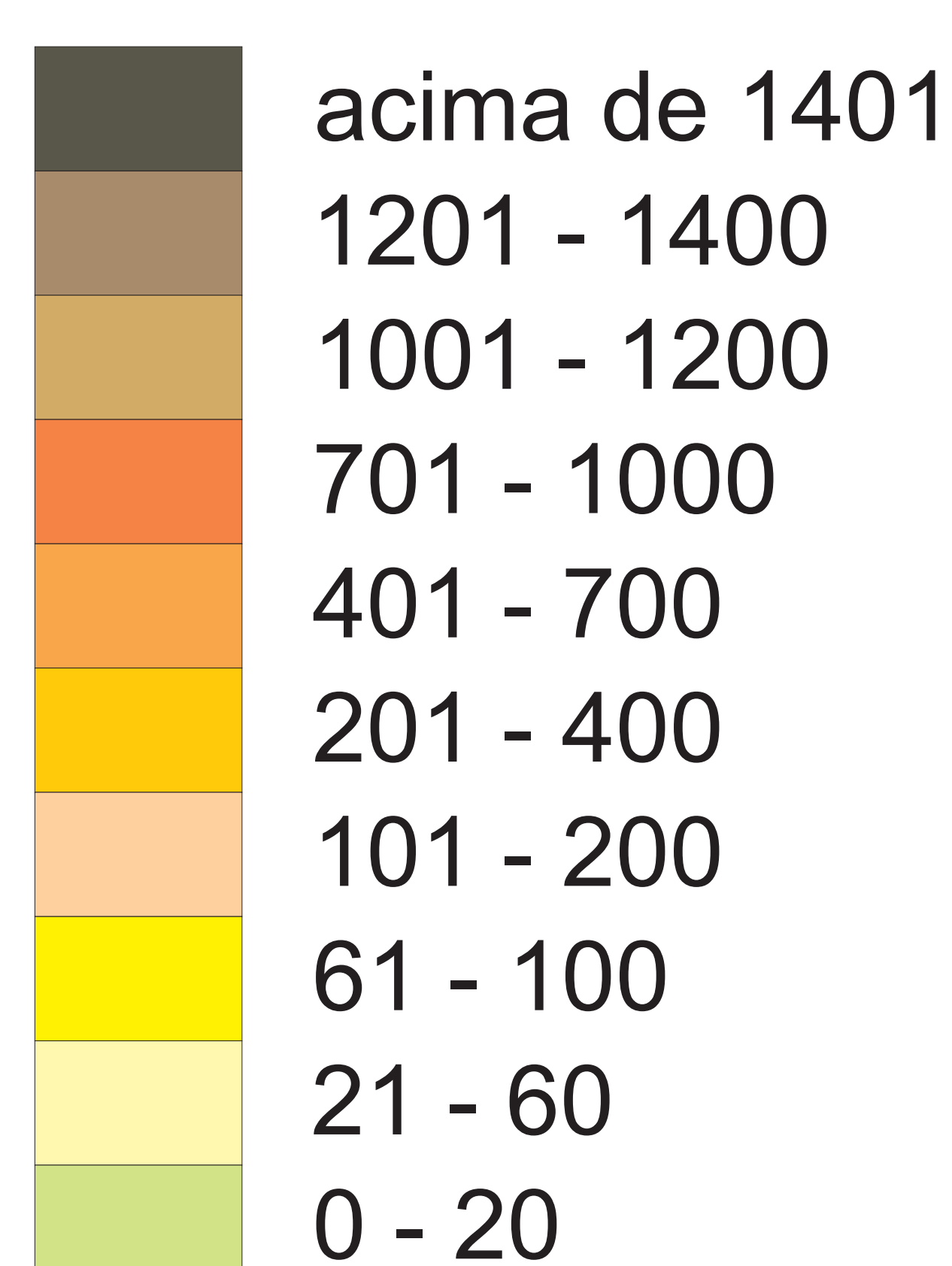
## Hipsometria



### LEGENDA:

-  limite da bacia
-  limite de sub-bacia
-  lagoa e barragem
-  rio principal
-  limite estadual
-  limite municipal no interior da bacia

### Hipsometria (em metros)



FONTES: a) Secretaria de Estado do Desenvolvimento Econômico Sustentável - Mapa Político do Estado de Santa Catarina, escala 1:500.000, 2010; b) IBGE/EPAGRI - Cartas topográficas digitais, escala 1:50.000, 1978.

ORGANIZAÇÃO E DESENHO: Geóg. Mauricio Pamplona.

Realização

Apoio

Patrocínio

